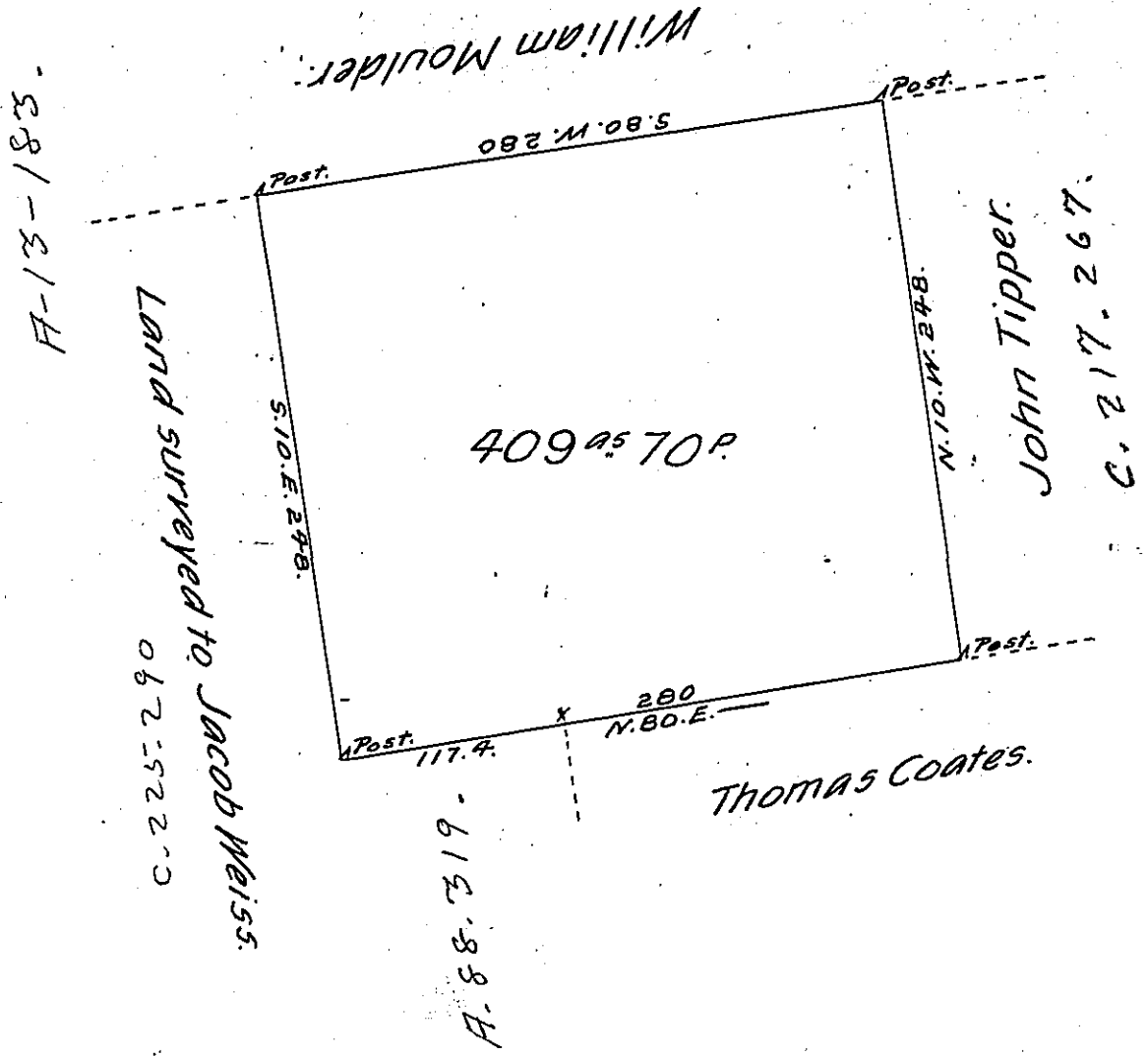


Penit Forest  
CARBON



By Virtue of a Warrant dated the 3<sup>d</sup> August 1793, Surveyed the 14<sup>th</sup> June 1794 to William Gibbens the above described tract of land Situate on the Waters of Bear Creek being a branch of Lehi in the County of Northampton. Containing four hundred and nine Acres <sup>70 P.</sup> and the allowance of Six p. Cent &c.

p- Geo. Palmer. D.S.

To Daniel Brodhead Esq. }  
Surveyor General

IN TESTIMONY that the above is a copy of the original remaining on file in the Department of Internal Affairs of Pennsylvania, made conformably to an Act of Assembly approved the 16th day of February, 1833, I have hereunto set my Hand and caused the Seal of said Department to be affixed at Harrisburg, this sixteenth day of December 1904.

*Geo. P. Benson*  
Secretary of Internal Affairs.